

# HMS IPconfig User Manual

## About HMS IPconfig

IPconfig is a Windows-based tool for configuration of TCP/IP settings in HMS devices.

IPconfig will detect all compatible and active HMS devices on the local network.

The devices do not have to be on the same Ethernet subnet as the computer running IPconfig.

## Installation

1. Download IPconfig from [www.anybus.com/support](http://www.anybus.com/support).
2. Unpack the contents of the zip archive and run the installer program.

## Scanning for Connected Devices

When IPconfig is started it will automatically scan for compatible and active HMS devices.

To change the IP configuration for a device, click on the device in the list.

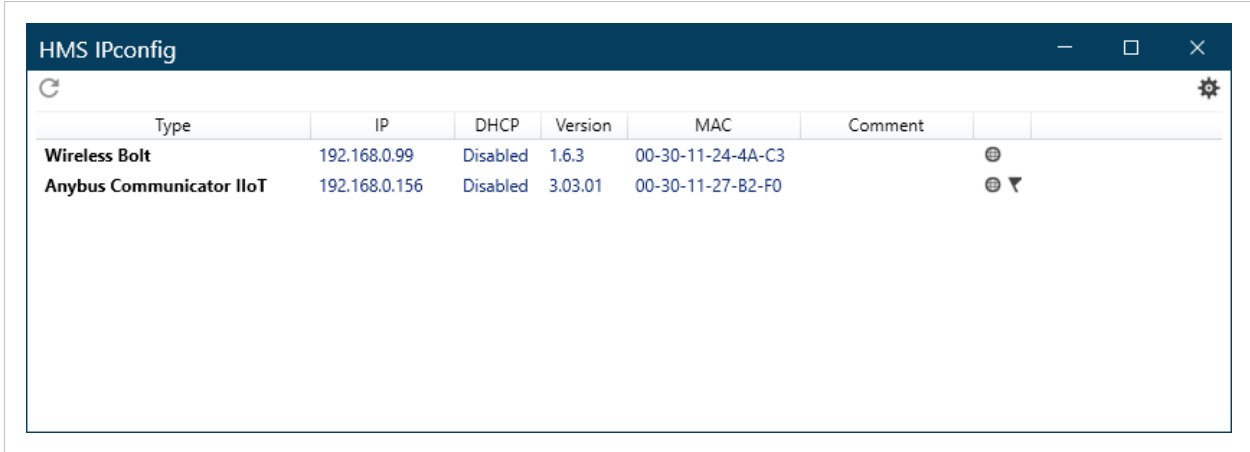






Figure 1. IPconfig device list

Table 1. Web-interface Icons

Icon	Function	Description
	Refresh	Refresh the device list
	Options	Change the scan settings
	Web	Open the device in the default web browser
	Wink	Flash LED indicators on the device (if supported by the device)

## Device Configuration

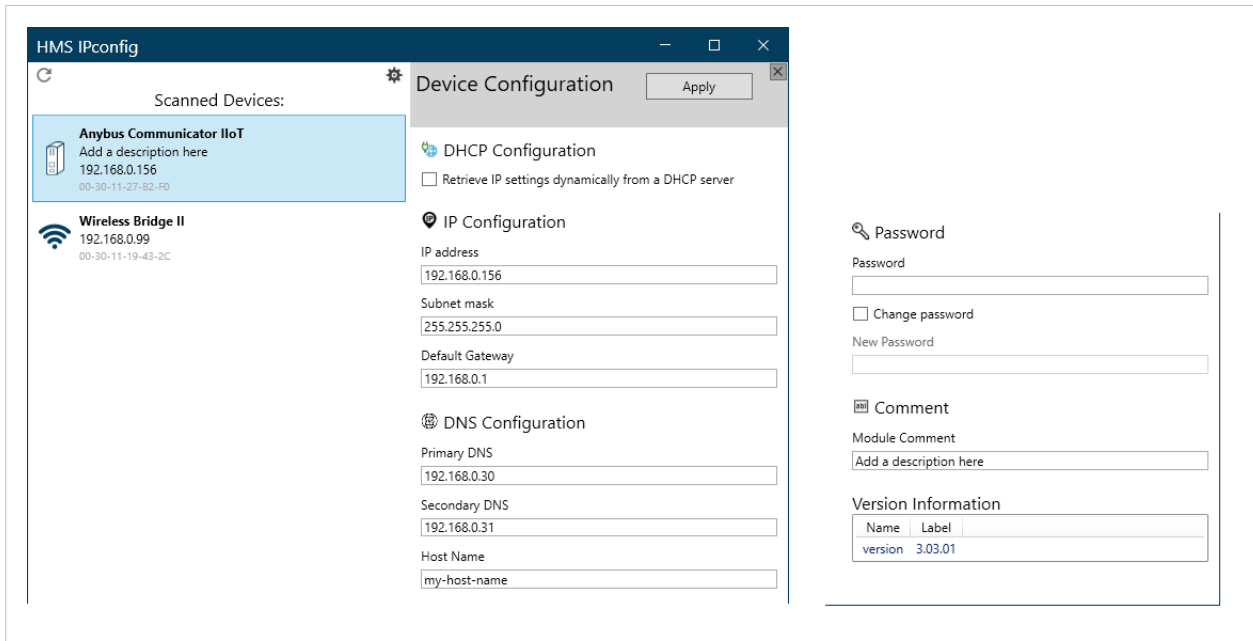


Figure 2. Ethernet configuration

The available configuration settings depend on the selected device.

After editing the configuration, click on **Apply** to apply the new settings and reboot the device.

### IP and DNS Configuration



#### IMPORTANT

If there is no DHCP server available on the network, do not enable DHCP.

IP and DNS settings can be configured manually or dynamically using DHCP.

### Change Password



#### IMPORTANT

For security reasons the default password should always be changed.

To set a new password:

1. Select the **Change password** checkbox.
2. Enter the current password in the **Password** field.
3. Enter the new password in the **New password** field.

### Comment

This field can be used to add a name or description of the device for easier identification.

The comment is not uploaded to the device.

## Version Information

Additional information about the device.

This field cannot be edited.

## Scan Settings

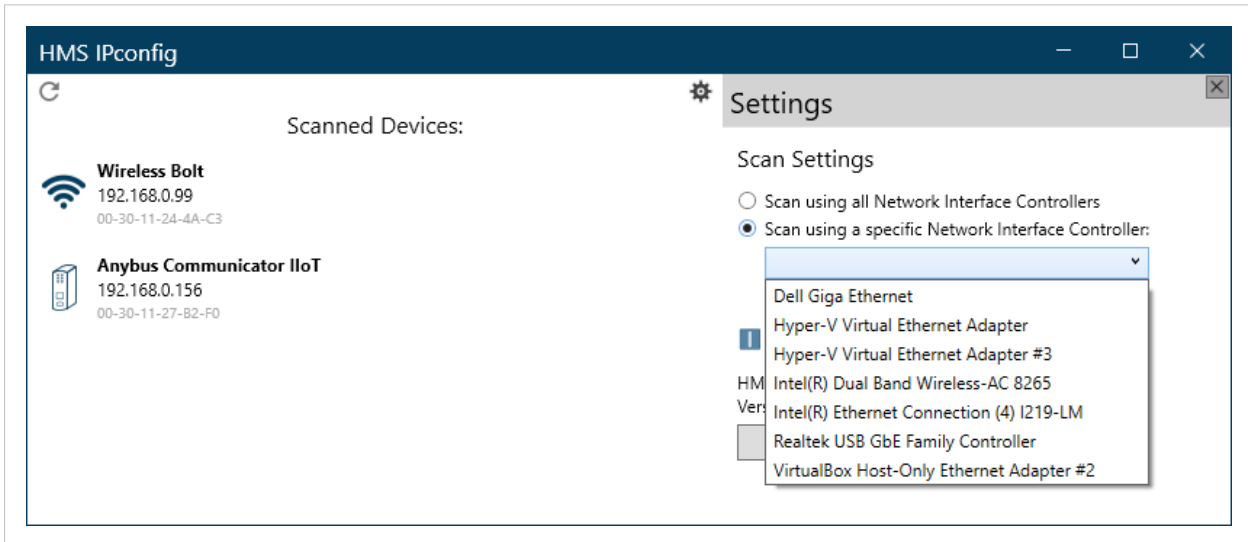


Figure 3. IPconfig scan settings

IPconfig can be configured to scan for devices using only a specific network interface.

The default setting is to scan using all network interfaces.

The scan settings are saved when you exit IPconfig.

If no devices are detected when you start up IPconfig, check this settings and change it to **Scan using all Network Interface Controllers**, then refresh the device list.